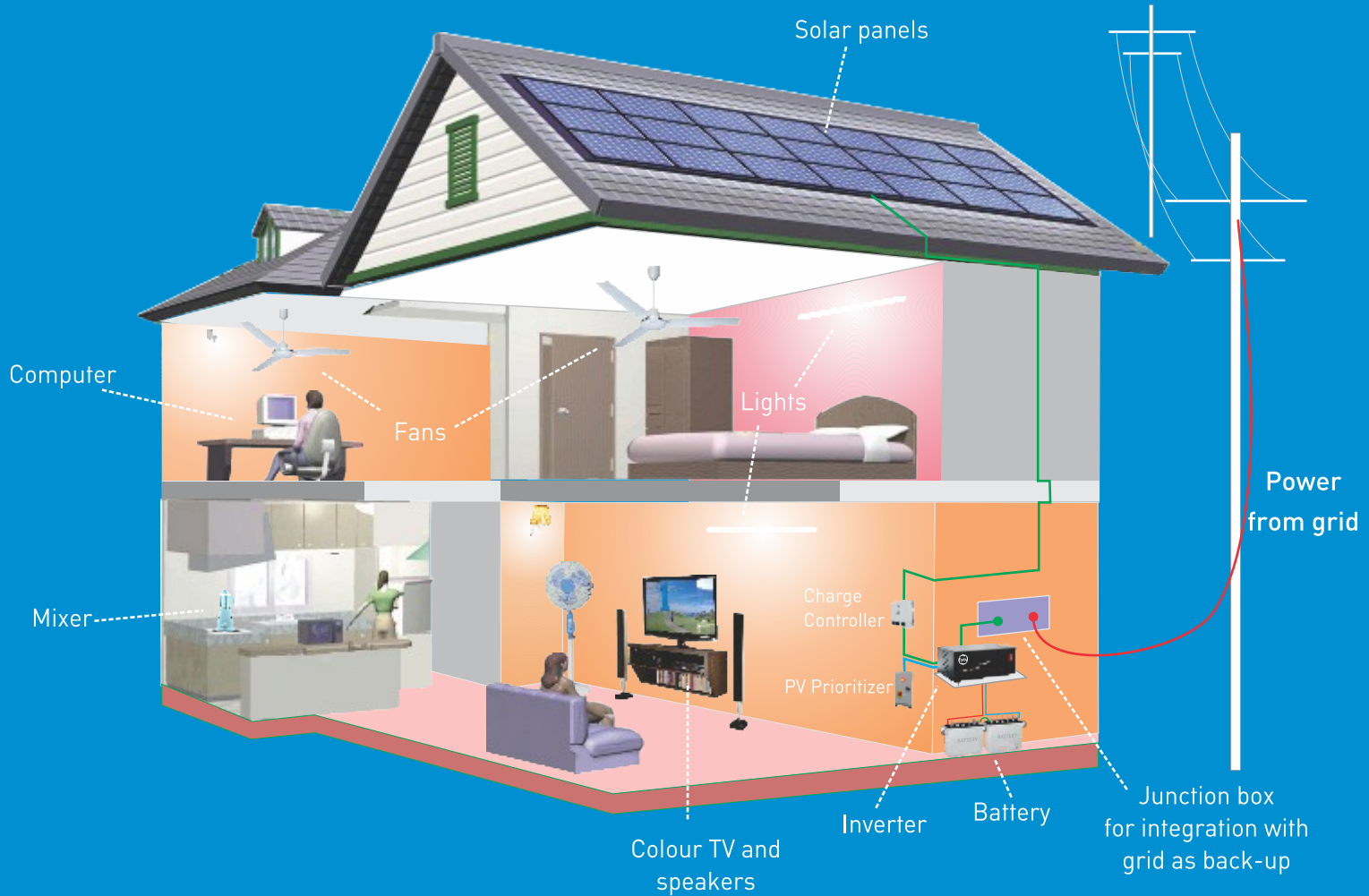


# Solar for Independent, Reliable Power



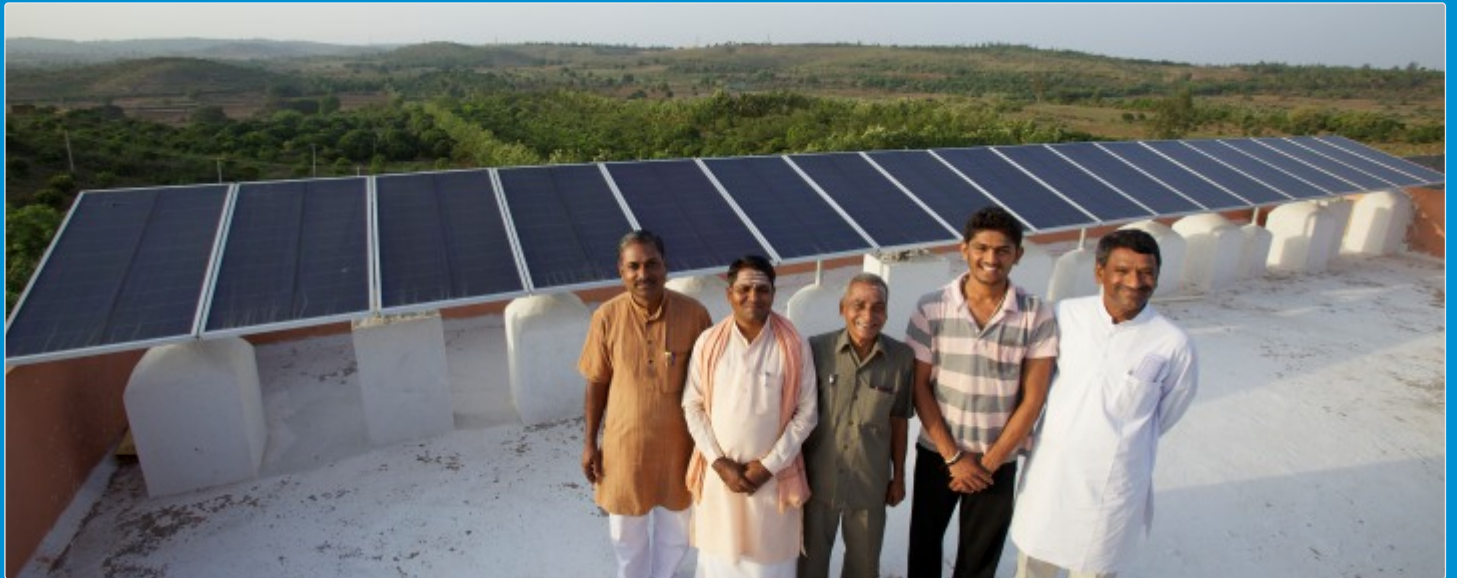
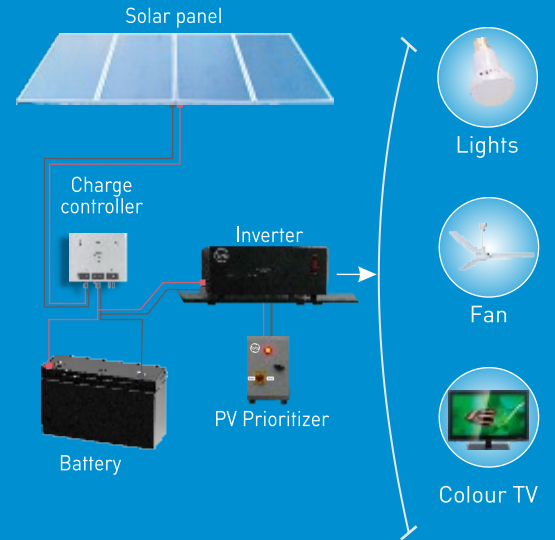
## Benefits:

- ✓ No hassle and fuss of buying diesel fuel, pouring and storage
- ✓ Grid back-up even on cloudy days
- ✓ Longer life-time than normal battery inverter system
- ✓ Unique prioritizer gives priority to solar and saves electricity
- ✓ Installed and wired by Orb's trained technicians
- ✓ 3 free preventative maintenance visits in the 1st year



Solectric AC	600 *	1500	3000	3000
Energy per day (Wat-hours)	600	1500	3000	3000
PV module capacity (Wp)	200	500	1000	1000
Inverter capacity (VA)	880	1400	1400	2500
Batery configuratation	100Ah	150Ah x 2	150Ah x 4	150Ah x 4
Maximum loads (Watts)	500	1000	1000	2000

\* This model do not come with prioritizer  
 Note: The above specifications are subject to change without notice.



For more information, please contact

